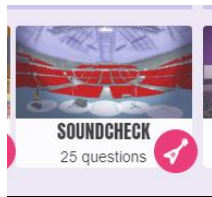
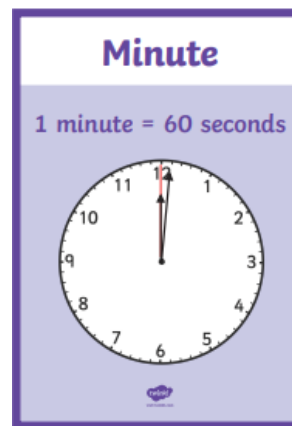
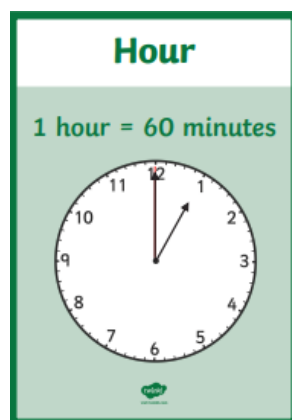


Maths

TTRS: Sound check



I can record and compare time using minutes and seconds.
BLP: Making links



Fluency: Hard

Order the statements from the shortest to the longest length of time.

half a minute	4 minutes
3 seconds	1 second
45 seconds	2 minutes

Fluency: Harder

Write the equivalent length of time using minutes and seconds.

<u>Time in minutes</u>	<u>Time in seconds</u>
2 minutes	
	100 seconds
3 minutes 20 seconds	



Year 4 Day Three

Reasoning/Problem solving: Who is the quickest? Explain your reasons.

Alex takes 153 seconds to skip around the playground.



Jack takes 2 minutes 23 seconds.

English

Spelling: Fix the mistakes.

urly	eyght	enuf	exersize	experiuance
experriment	extreem	famus	favorite	february

LO - I can use coordinating conjunctions (FANBOYS)

BLP - Noticing

Co-ordinating Conjunctions

There are seven co-ordinating conjunctions.
They give equal importance to the words or sentences they connect.

A colorful fan-shaped diagram with seven segments. The top row contains the words 'for', 'and', 'nor', 'but', 'or', 'yet', 'so'. The bottom row contains the letters 'F', 'A', 'N', 'B', 'O', 'Y', 'S' corresponding to the words above.

Hard - Use one of the 'FANBOYS' to connect the two clauses together and write as a full sentence.

We all know why we eat food		what happens after it has passed our lips?
If food goes down the 'wrong hole', it hurts		it can make us choke.
The stomach gurgles when we are hungry		it makes us ready for our meals!



Year 4 Day Three

Harder - Use the sentence starters below to include a 'FANBOYS' conjunction and then add a clause to complete the sentence.

1. The food stays in the stomach for around four hours...
2. When we put food into our mouth, we use our teeth to chew...
3. Inside the oesophagus, muscles contract to push down our food...

Hardest - Create your own sentences about the digestive system and try to use a different 'FANBOYS' conjunction in each sentence.

Science

LO - I can identify and name parts of the digestive system.

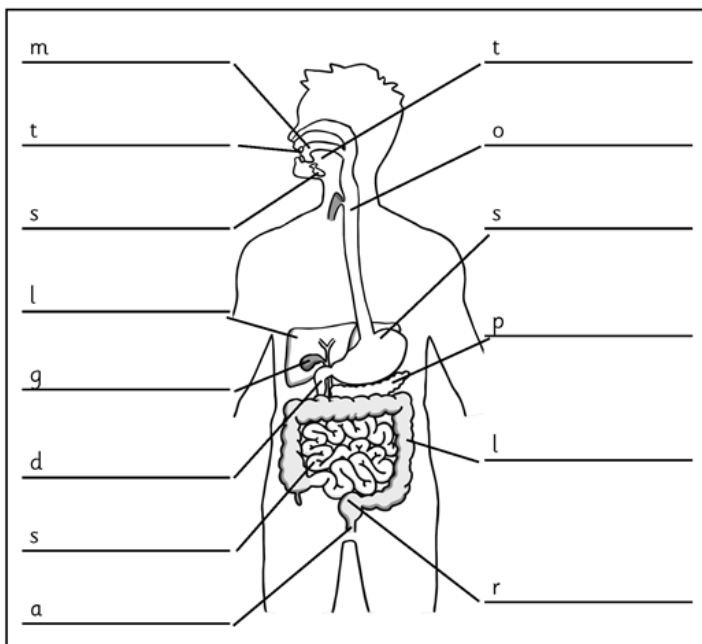
BLP - Making links

Hard - Draw a picture of the digestive system (like the one below) in your book.

Harder - Fill in the gaps with the key words.

Hardest - Use some of the key words to create some sentences:

Eg. The **oesophagus** is the long tube that carries food to the **stomach**.



Key words: mouth, tongue, teeth, salivary glands, oesophagus, stomach, duodenum, small intestine, large intestine, gallbladder, pancreas, liver, rectum, anus.

