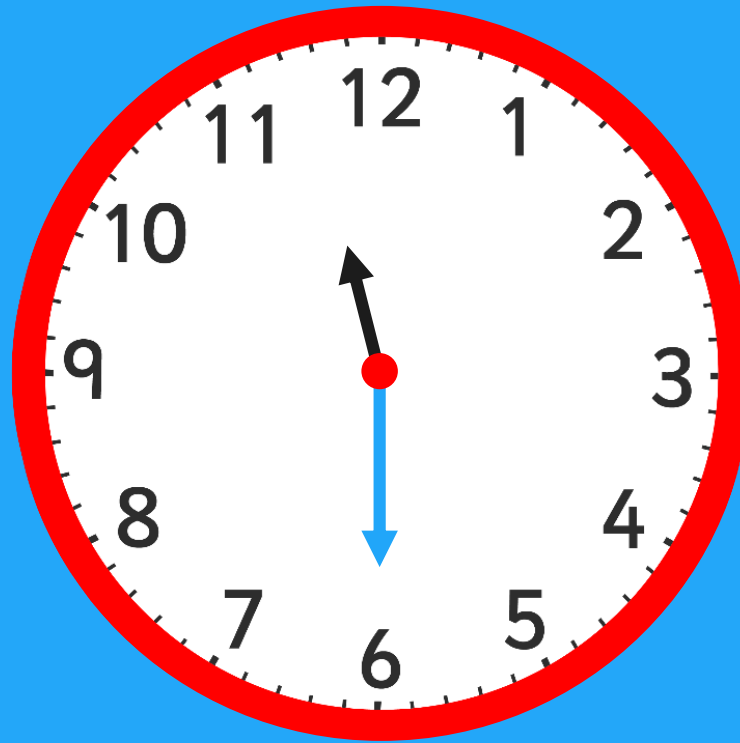


Telling the Time: Half Past



Aim

- To tell the time at half past.

Success Criteria

- Know that a clock is made up of 2 halves.
- Know the time is read 'past the hour'.

Questions

How many seconds are there in **a minute**?

60

How many minutes are there in **an hour**?

60

How many minutes are there in **half an hour**?

30

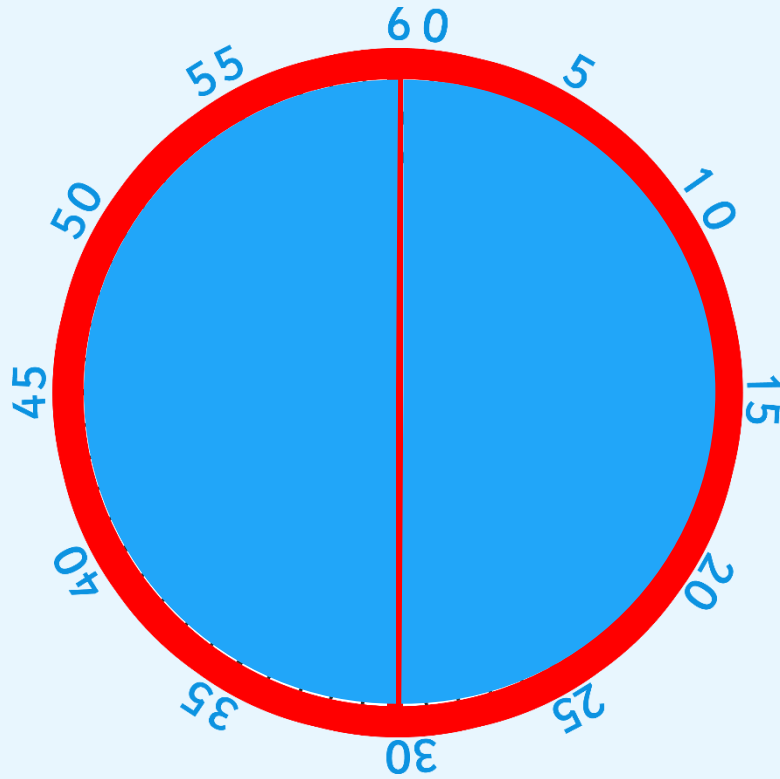
How many days are there in **a month**?

28-31

How many days are there in **a year**?

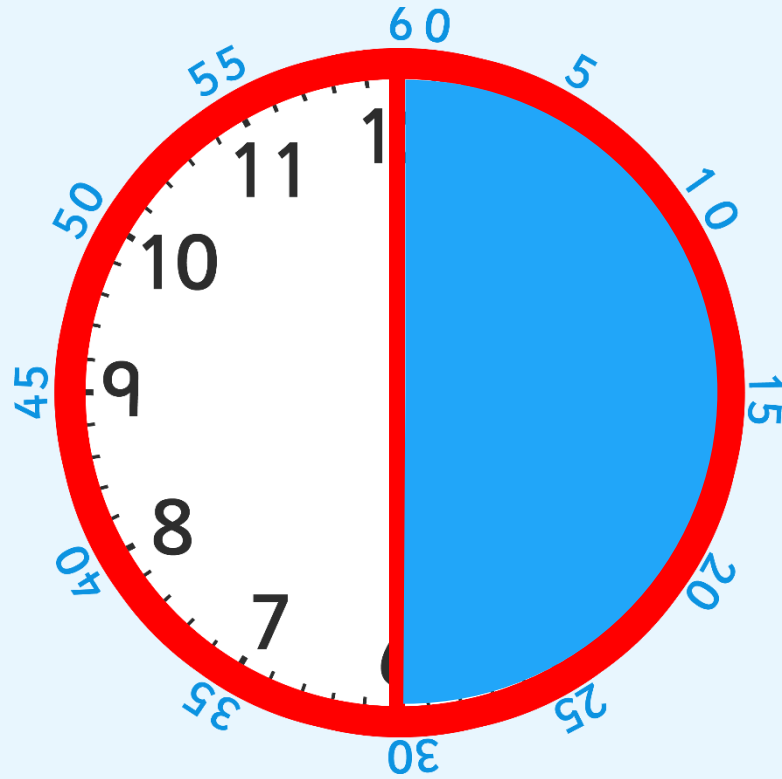
365

A clock face is a full circle which is made up of 2 halves.

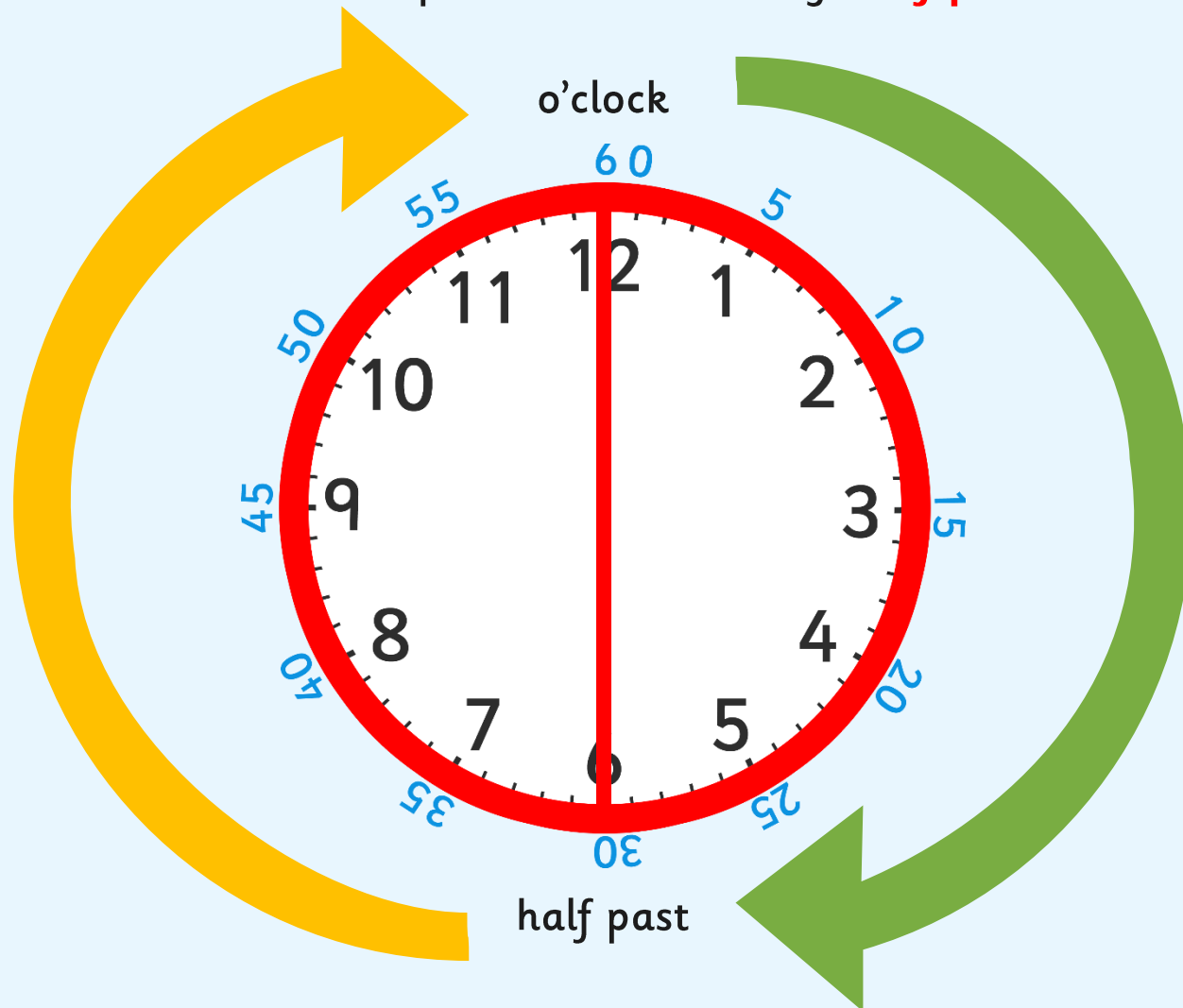


How many minutes make up half of an hour?

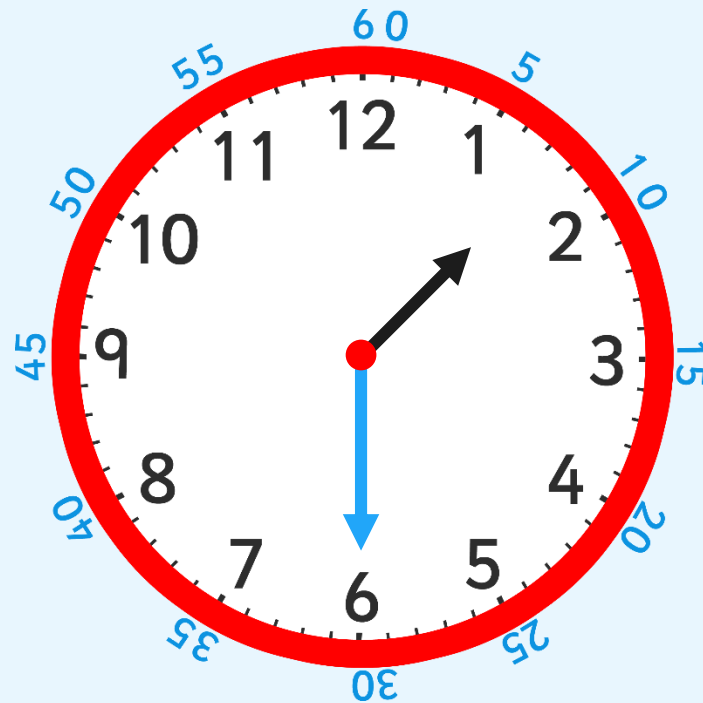
There are 30 minutes in half of an hour.



When it is 30 minutes past the hour we say '**half past**' the hour.



Look at this time.
The big hand is pointing at 6, which is halfway around the clock.
Where is the small hand pointing? Is it on the number?
It's half way between **1** and **2**.



half past

What time is this clock showing?

Where is the **big hand** pointing?

6

half past 11

Where is the **little hand** pointing?

halfway between 11 and 12



half past

What do you notice about the small hand?

It is halfway between 3 and 4.

What time is this clock showing?

Half past three.



half past

Which clock is showing **half past 2**?

Which clock is showing **half past 9**?

Which clock is showing **half past 7**?

