



Year 3 Week 10 Day 1

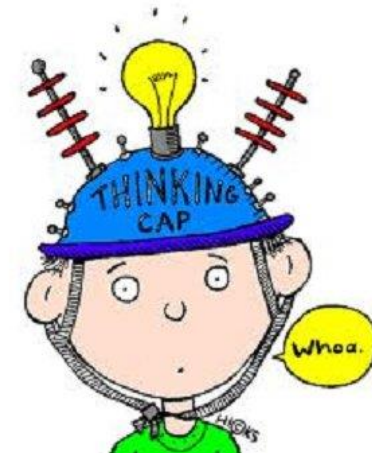
Order of Learning

1. Starter
2. Main Activity

To identify perpendicular lines

If you want to Challenge yourself,
try our

HOTs

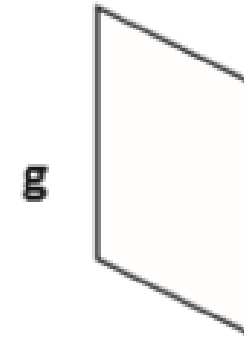
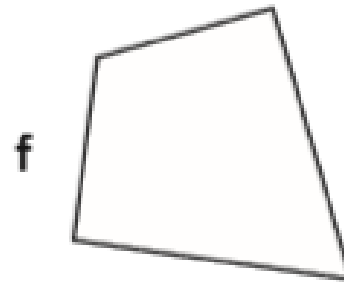
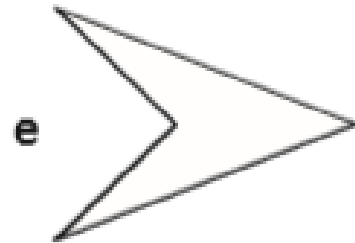
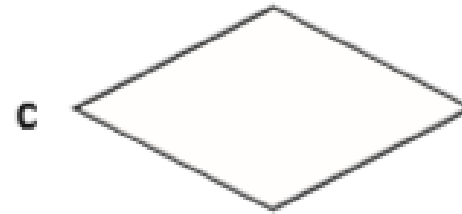
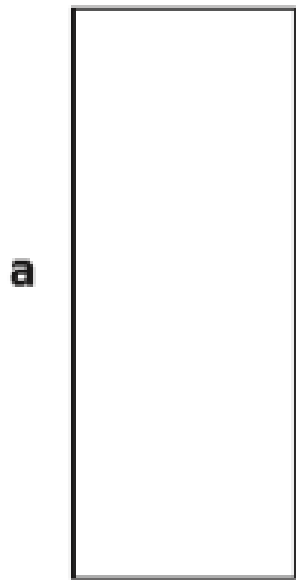


To be completed by everyone

Answers will be given on the answer sheet on Friday

Starter:

- 5** For each shape, circle the corners that are right angles. Write the number of right angles inside each shape.



Maths - Shape

To be completed by everyone

Listen to the following video:

<https://www.youtube.com/watch?v=P3AOoLbA3us>

To identify perpendicular lines

Main Activity

Click on the link and begin your learning journey.

Complete the pre-quiz, watch the video and complete the activities

<https://classroom.thenational.academy/lessons/to-identify-perpendicular-lines>

The answers will be given at the end of the video.

Please stop the video and complete the activity before listening to the answers.

HOTs



These lines are NOT parallel.



Convince me.

Rosie describes a 2-D shape.



My shape has 2 pairs of parallel sides. The lengths of the sides are not all equal.

Draw the shape that Rosie is describing.

Could this square be Rosie's shape?



Explain why.

Answers will be given on the answer sheet on Friday

Spellings

Can you write a definition for each of these spellings?

1. potatoes
2. suppose
3. island
4. heart
5. regular
6. sentence
7. arrive
8. mention

Can you create a word search puzzle including the 8 spellings for this week?

Looking Good!

D	E	Y	E	S	H	A	D	O	W	N	N	B	H
T	U	C	R	I	A	H	O	H	D	M	A	L	P
G	A	B	M	O	C	T	O	A	T	O	S	O	E
O	P	E	R	F	U	M	E	I	R	U	P	W	O
A	N	S	Y	I	O	B	T	R	O	S	A	D	W
T	O	S	O	I	T	E	K	S	T	T	R	R	A
E	P	A	S	D	E	A	B	T	M	A	S	Y	X
E	A	R	A	Z	O	R	Y	Y	A	C	H	E	I
R	A	N	U	A	S	D	A	L	K	H	A	R	N
B	A	I	B	R	U	S	H	E	E	E	M	A	G
S	T	Y	L	I	S	T	R	E	U	U	P	N	P
T	H	D	M	I	R	T	N	S	P	N	O	Y	M
C	P	E	R	M	A	N	E	N	T	I	O	S	P
A	I	C	U	R	L	I	N	G	I	R	O	N	T

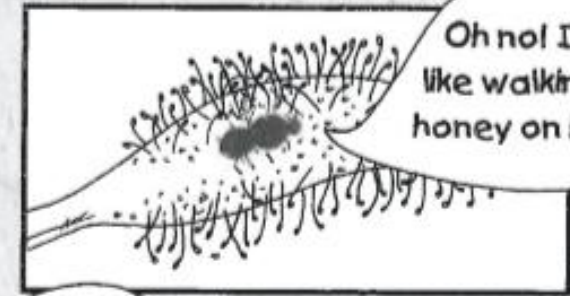
Read the text and answer the questions carefully. Remember to use the text!

1. Does the writer think summertime in the garden is a noisy place?
2. Where do you think the cobra lily got its name from?
3. Do you think the fly that is trapped in the cobra lily knows he can't escape?
4. How does the insect tell us that the leaves of the sundew plant are sticky?
5. Look at paragraph 2 and 3, find and copy another word for 'mini beast'.
6. Who do you think would read this text?
7. What clues on the page suggest this?
8. Which plant would the writer describe as lazy?
9. What is it like on the inside of a Venus Fly Trap?
10. Did you enjoy learning about killer plants? Why?

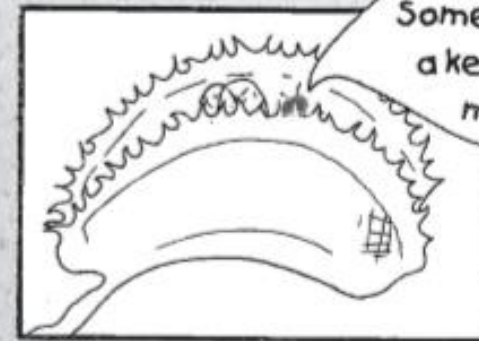


Summer is a time when gardens are full of beautiful flowers and wonderful smells, of buzzing bees and singing birds. But the garden is not always a happy place to be, especially if you have six legs and a pair of wings. So the next time you're invited to dinner BEWARE, because the dinner just might be YOU!

When an insect gets stuck on the sticky leaves of the Sundew plant there is no escape. Slowly the leaf curls up like the tail of a cat and wraps itself around the poor thing. After the soft juicy parts are dissolved by the plant, the leaf uncurls and the hard bits fall off.



Oh no! It's like walking in honey on here



Help! Somebody find a key and let me out

When a creepy crawly touches the hairs of the Venus Fly Trap - SNAP! It is imprisoned behind spiky bars and walls which press in tighter and tighter and tighter before the plant gulps it down.



The Cobra Lily doesn't have to do much. It has leaves that look like ships' funnels and when the insect lands on the slippery lip - SPLASH! It falls into a watery pool at the bottom of the plant and drowns. Mmmmm bug soup. Tasty!

This swimming pool is a bit crowded. And where's the ladder to get out?

English - Non- Chronological Report Lesson 1

This week we are going to follow some lessons from Oak National Academy. Click the link to enter your online classroom.

<https://classroom.thenational.academy/lessons/reading-comprehension-fact-retrieval-573214/>

Make sure as a starter you complete the pre-learning quiz so your adult can see where you might get a bit stuck!

Activity - Non-Chronological Report Lesson 1

Once you have watched the video there is an activity to complete. This activity can be completed in your books.

The activity answers will be posted alongside the other answers at the end of the week.

Don't forget to complete the exit quiz which gives you instant feedback and answers.

Science



Using all the work on plants you have completed over the last few weeks, can you create a fact file all about plants?

Think about

- Parts of a plant
- What a plant needs
- How plants transport water
- How plants adapt to their environment