



Year 3 Week 12 Day 1

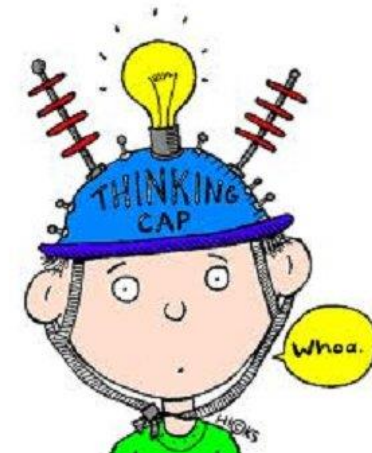
Order of Learning

1. Starter
2. Main Activity

Measure: To read a scale

If you want to Challenge yourself,
try our

HOTs



To be completed by everyone

Answers will be given on the answer sheet on Friday

Starter:

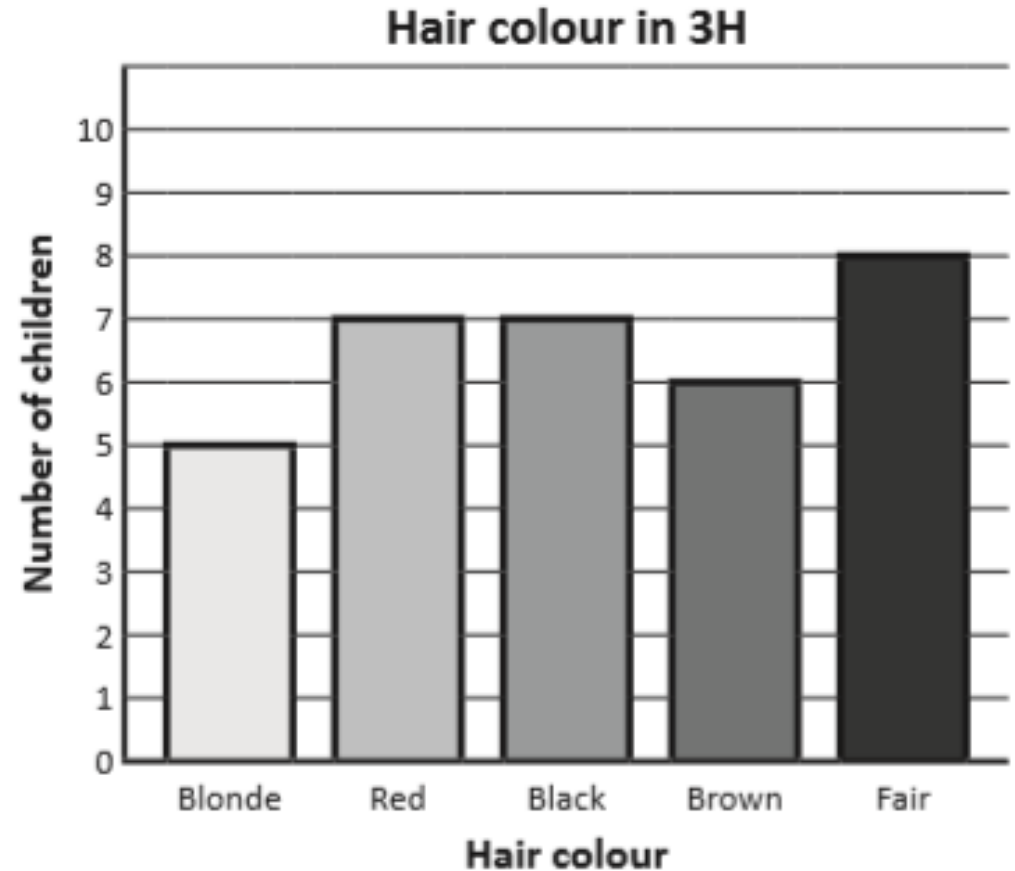
1 Answer the questions about the data shown on this bar chart.

a How many children have brown hair?

b Which colour hair do the smallest group of children have?

c Which colour hair do most children have?

d What do you notice about the number of children who have either red or black hair?



Maths - Measure

To be completed by everyone

Measure: To read a scale

Main Activity

Click on the link and begin your learning journey.
Complete the pre-quiz, watch the video and complete the activities

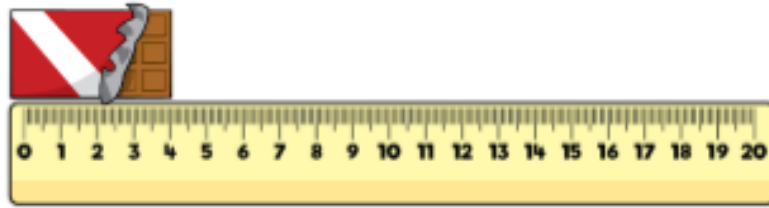
<https://classroom.thenational.academy/lessons/measure-to-read-a-scale>

The answers will be given at the end of the video.
Please stop the video and complete the activity before listening to the answers.

HOTs



Tommy thinks that this chocolate bar is 4 cm long.
Is he correct?



Convince me.

Three children measured the same toy car.

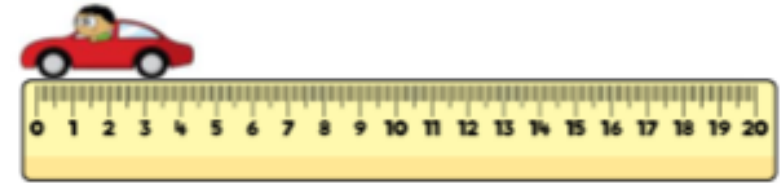
Eva says that the car is 6 cm and 5 mm



Dexter says the car is 5 cm



Annie says the car is 4 cm 5 mm



Who is correct?
Who is incorrect?
Explain why.

Answers will be given on the answer sheet on Friday

Spellings

Can you write a definition for each of these spellings?

1. actual
2. early
3. knowledge
4. imagine
5. regular
6. recent
7. strange
8. surprise

Can you create a word search puzzle including the 8 spellings for this week?

Looking Good!

D	E	Y	E	S	H	A	D	O	W	N	N	B	H
T	U	C	R	I	A	H	O	H	D	M	A	L	P
G	A	B	M	O	C	T	O	A	T	O	S	O	E
O	P	E	R	F	U	M	E	I	R	U	P	W	O
A	N	S	Y	I	O	B	T	R	O	S	A	D	W
T	O	S	O	I	T	E	K	S	T	T	R	R	A
E	P	A	S	D	E	A	B	T	M	A	S	Y	X
E	A	R	A	Z	O	R	Y	Y	A	C	H	E	I
R	A	N	U	A	S	D	A	L	K	H	A	R	N
B	A	I	B	R	U	S	H	E	E	E	M	A	G
S	T	Y	L	I	S	T	R	E	U	U	P	N	P
T	H	D	M	I	R	T	N	S	P	N	O	Y	M
C	P	E	R	M	A	N	E	N	T	I	O	S	P
A	I	C	U	R	L	I	N	G	I	R	O	N	T

Read the text and answer the questions carefully. Remember to use the text!

1. What does it mean to recycle?
2. What sorts of things can you recycle?
3. What type of text is this? A Letter, a poster or a leaflet?
4. Read line 2, is Whitby council asking us or telling us to recycle?
5. Do all rubbish items go into the black box?
6. Why do you think the council might need to help people with a disability put their rubbish out?
7. What two words in the first line tell you this?
8. Draw and label a wheelie bin
9. Why do you think the council says 'thank-you' at the end of the leaflet?
10. Do you agree or disagree that 'every little helps' when it comes to recycling?

Recycle, Recycle

Making Whitby a cleaner, greener place to live!

Can you help us reach our target of recycling 35% of our town's waste?
We are sure you can. Last month we recycled 27% so we haven't got too far to go.

Weekly collections of Black Boxes from outside your home.

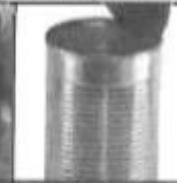
Please use plastic bags to separate different types of rubbish.



Paper



Glass



Tins



Clothing



Plastic



Batteries should be left beside the Black Box in a carefully sealed bag.

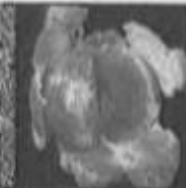
Green Waste Services – Weekly collections on Saturday.

Unless you are disabled, please leave your green wheelie bin at the end of your path or driveway.

All green waste should be placed in your green wheelie bin and **NOT** in plastic bags.



Weeds and Grass
Cuttings



Vegetables
and Fruit
Peel



Egg Shells

To order a Black Box call 01947 820227.

If you need any more information about recycling in Whitby, you can email us at 'recycling@whitby.gov.uk' or check out our website at 'www.whitby.gov.uk'.



Remember, every little helps.



English - Newspaper Report - Lesson 1

This week we are going to follow some lessons from Oak National Academy. Click the link to enter your online classroom.

<https://classroom.thenational.academy/lessons/reading-comprehension>

Make sure as a starter you complete the pre-learning quiz so your adult can see where you might get a bit stuck!

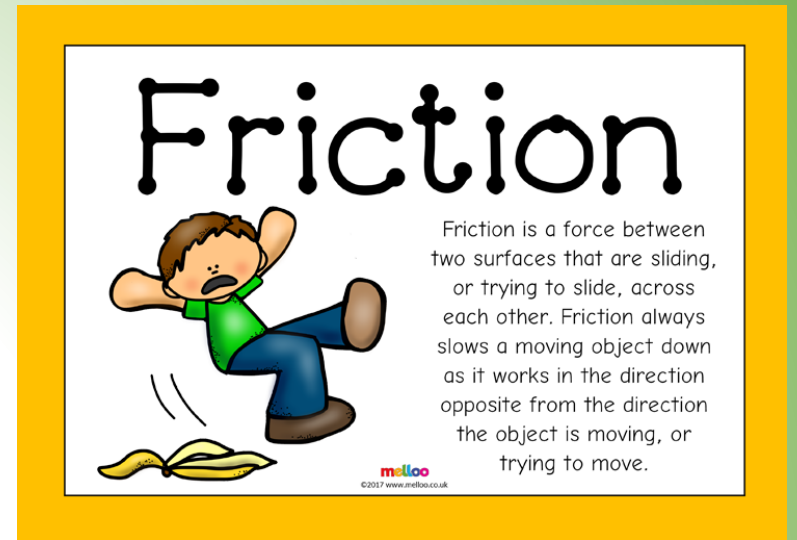
Activity - Newspaper Report - Lesson 1

Once you have watched the video there is an activity to complete, this activity can be completed in your books.

The activity answers will be posted alongside the other answers at the end of the week.

Don't forget to complete the exit quiz which gives you instant feedback and answers.

Science




<https://www.bbc.co.uk/bitesize/articles/zvp8jhw>

In the lesson above we are going to have a re-cap of friction. On the link there are some fun videos for you to watch and the activities are listed on there also.

Science

Friction



Friction is a force between two surfaces that are sliding, or trying to slide, across each other. Friction always slows a moving object down as it works in the direction opposite from the direction the object is moving, or trying to move.

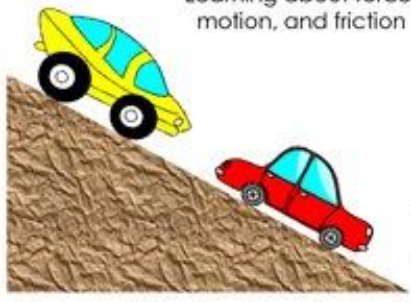
melloo
©2017 www.melloo.co.uk

Toy car investigation

Using a toy car, push it along a selection of smooth and rough surfaces eg. carpet, tiles, concrete, and see how far it travels. Ask your children if they can predict how far they think the car will travel on each surface.

Scientific Method and Toy Cars

Learning about force,
motion, and friction



© 2013 Hello Learning